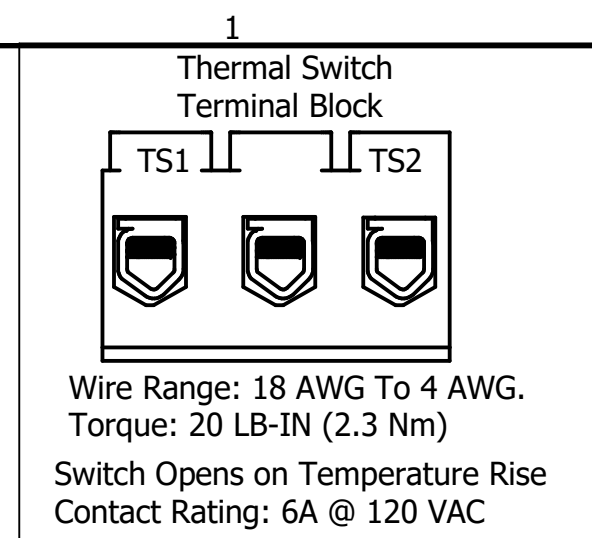


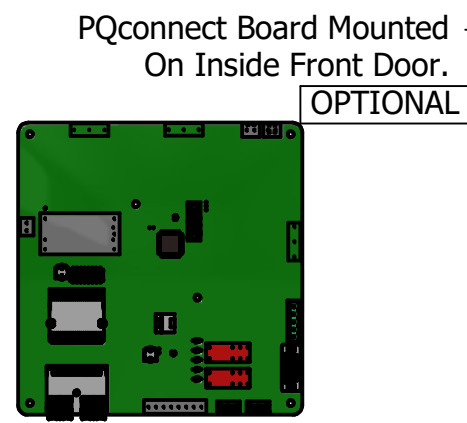
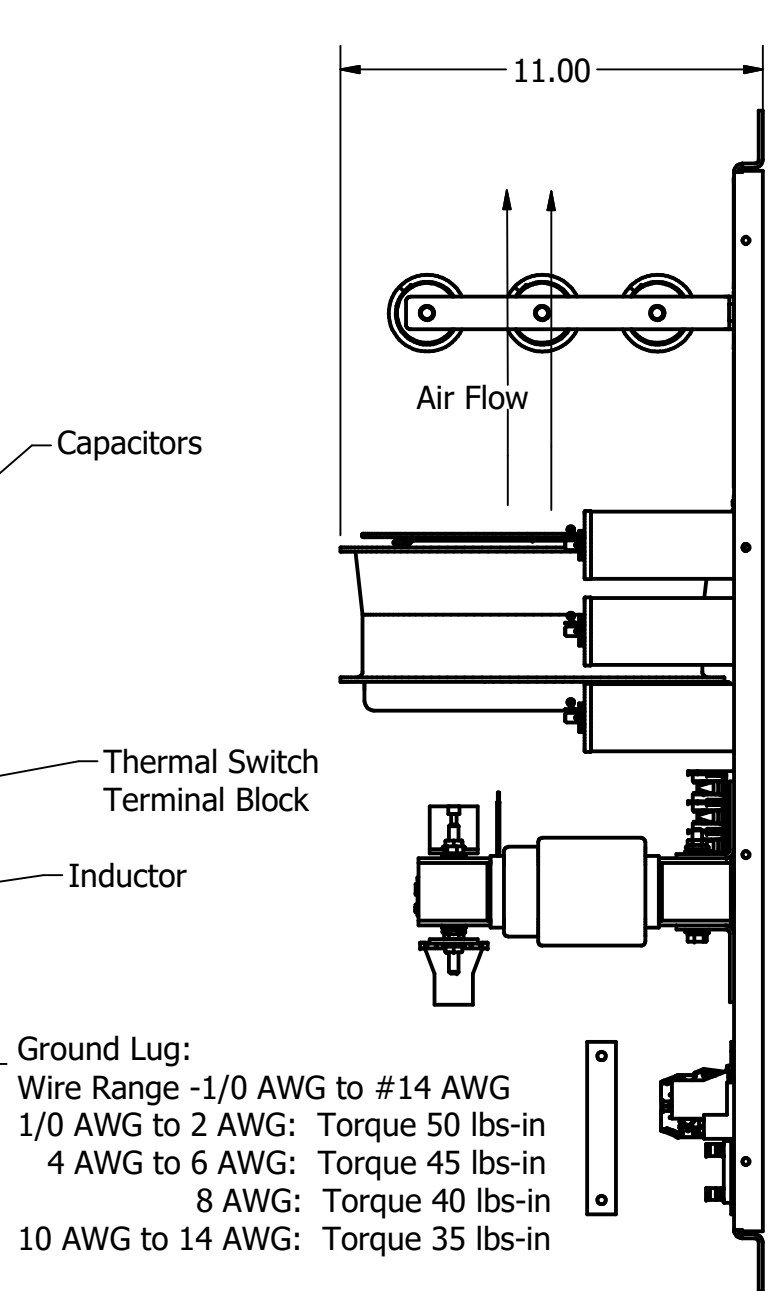
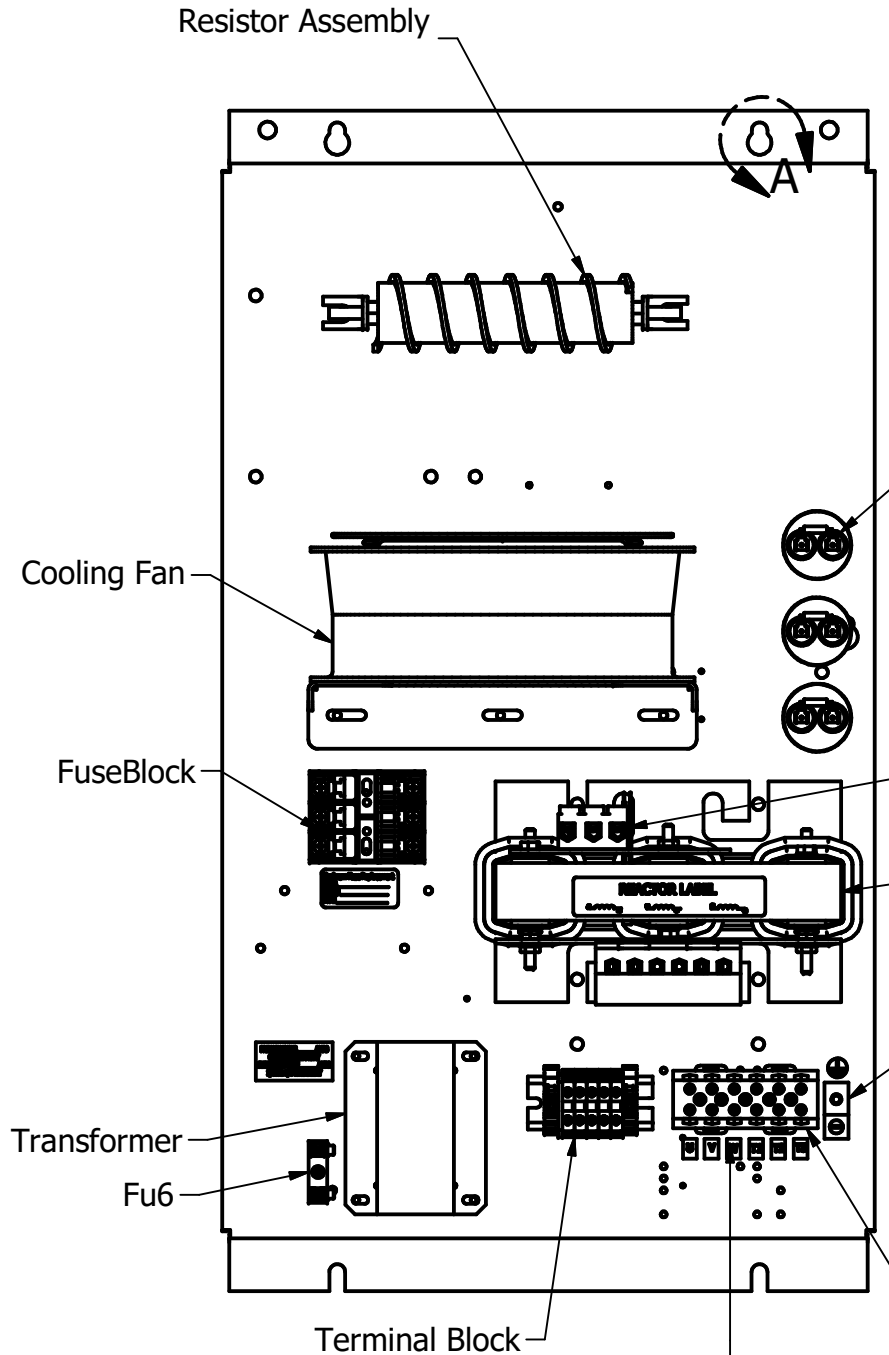
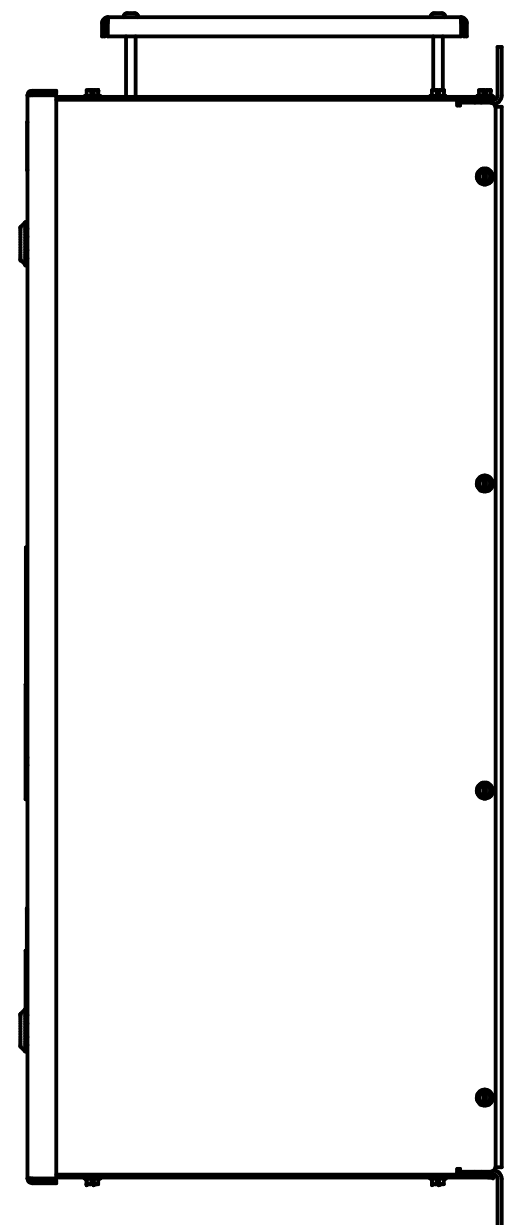
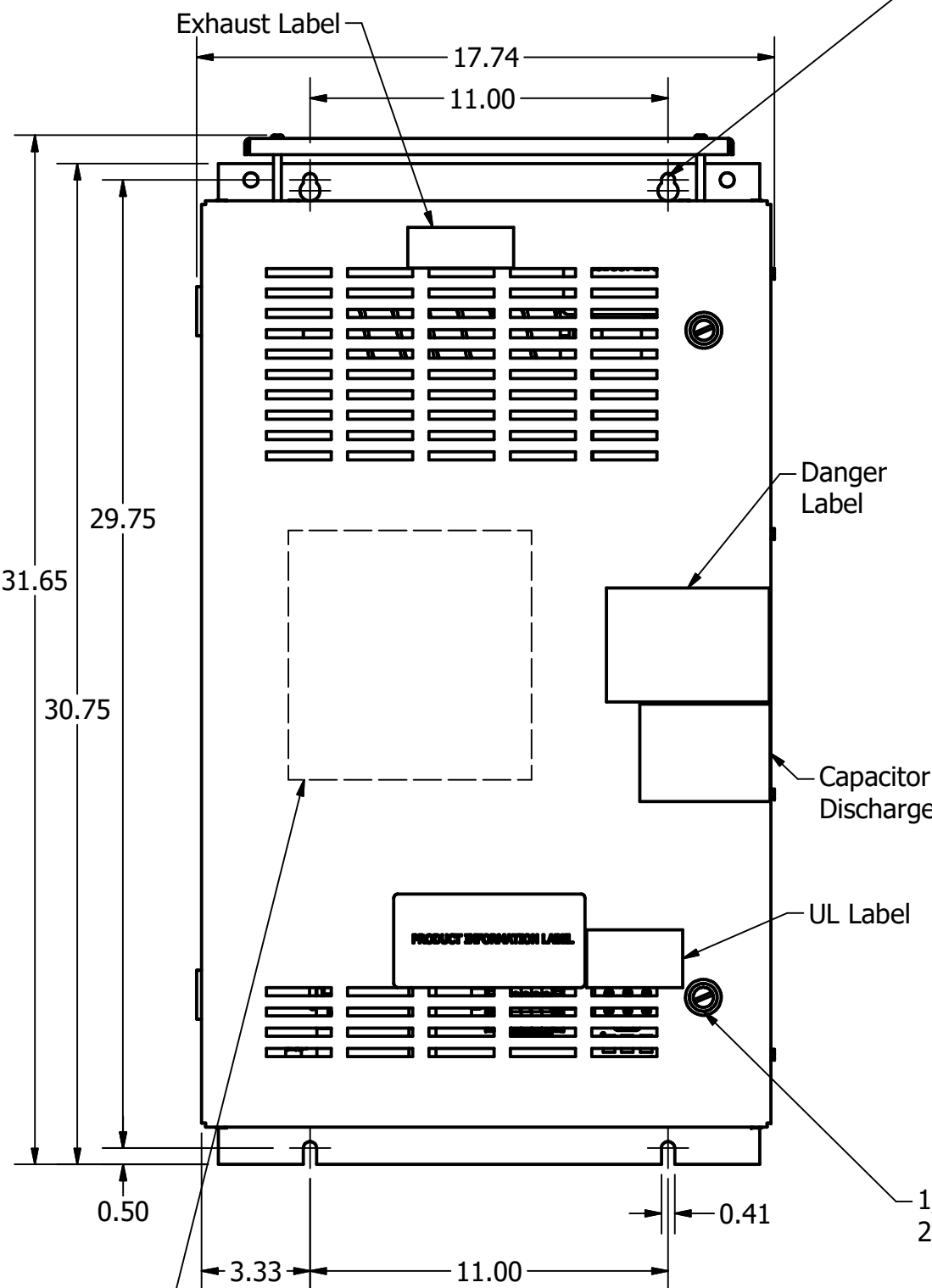
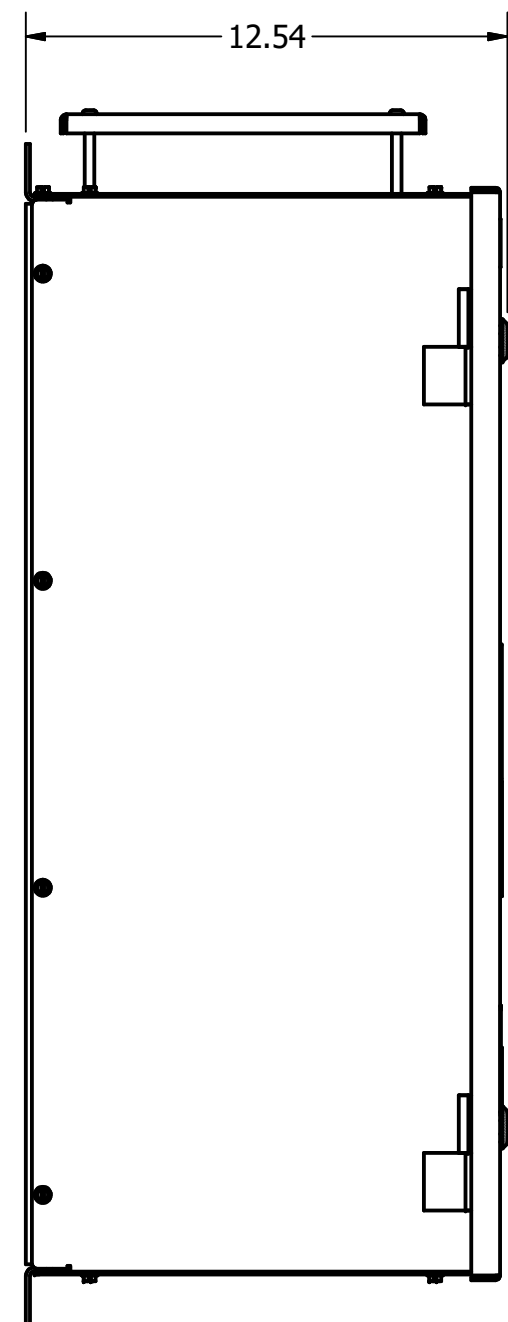
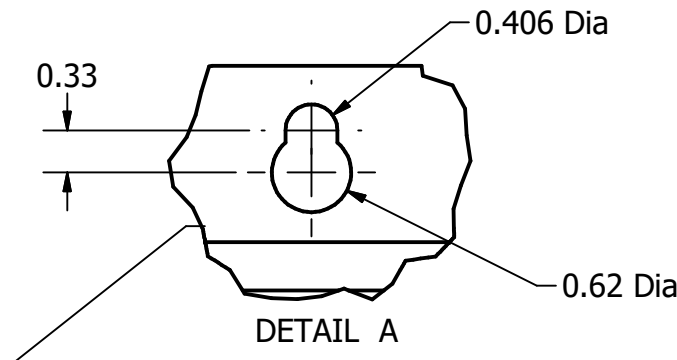
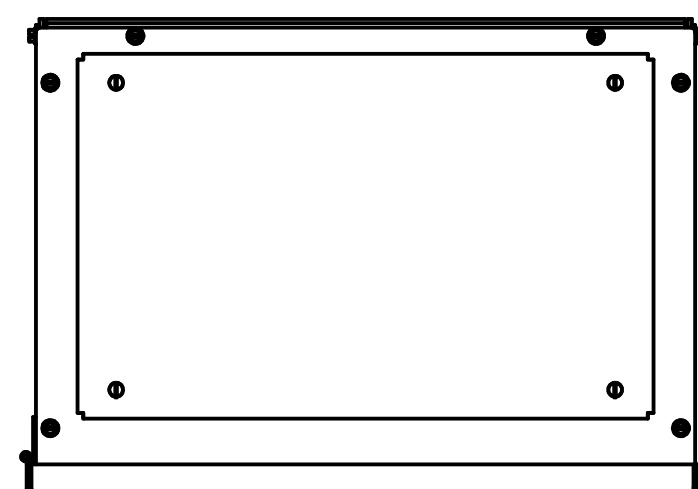
SineWave Part Number	Schematic Drawing#	Approx Weight (LBS)
KMG30A01A	24281-1A	139
KMG30A01P	24281-1P	140

HorsePower (HP)	kVar	Max Amps	Voltage (V)	HZ	Phase
20	3	30	480	60	3



D
C
B
A

D
C
B
A



U V W T1 T2 T3

Power Block Connections
 Wire Range -1 AWG to #22 AWG
 1 AWG to 4 AWG: Torque 35 lbs-in
 6 AWG to 14 AWG: Torque 30 lbs-in
 16 AWG to 20 AWG: Torque 25 lbs-in
 22 AWG: Torque 20 lbs-in

Customer Is Responsible For Installation to Meet All National And Local Electrical Codes.

Material(s) Shall be RoHS Compliant

THE INFORMATION AND DESIGNS CONTAINED IN THIS DRAWING ARE CONFIDENTIAL AND THE PROPRIETARY PROPERTY OF ALLIED MOTION TECHNOLOGIES INC. AND ITS SUBSIDIARIES. NEITHER THIS DESIGN NOR ANY INFORMATION CONTAINED IN THIS DRAWING MAY BE REPRODUCED OR DISCLOSED TO OTHERS WITHOUT THE EXPRESS WRITTEN CONSENT OF ALLIED MOTION TECHNOLOGIES INC. AND ITS SUBSIDIARIES.

NO	REVISION	DATE	BY
C	6735 Add TB	07/18/24	JRN
B	Add PQconnect Board	6/17/2020	DSW

TOLERANCES (EXCEPT AS NOTED)	DATE	SCALE
DECIMAL	10/07/2010	1/8
.XX ± .25		
.XXX ± .10		
FRACTIONAL ± 1/16		
ANGULAR ± 1°		

TCL W132N10611 Grant Drive
 Germantown, WI 53022
 © 2021 TCL, LLC

An Allied Motion Company

KMG30A01, SineWave Filter
 Enclosed Type 1, 20HP, 480V

DRN BY: DSW DATE: 10/07/2010 SIZE: C
 APRVD: 104352DG SHT 1 OF 1

4 3 2 1